



CONNELY

**Hangars to Lease
Dublin & Galway Airports**



Hangars to Let Galway Airport, Ireland



Hangar A - Ground Floor - 1,330 sq. m. (14,316 sq. ft)

Hangar A - First Floor - 148 sq.m. (1,593 sq. ft)

Hangar B - Ground Floor - 1,330 sq.m. (14,316 sq. ft)

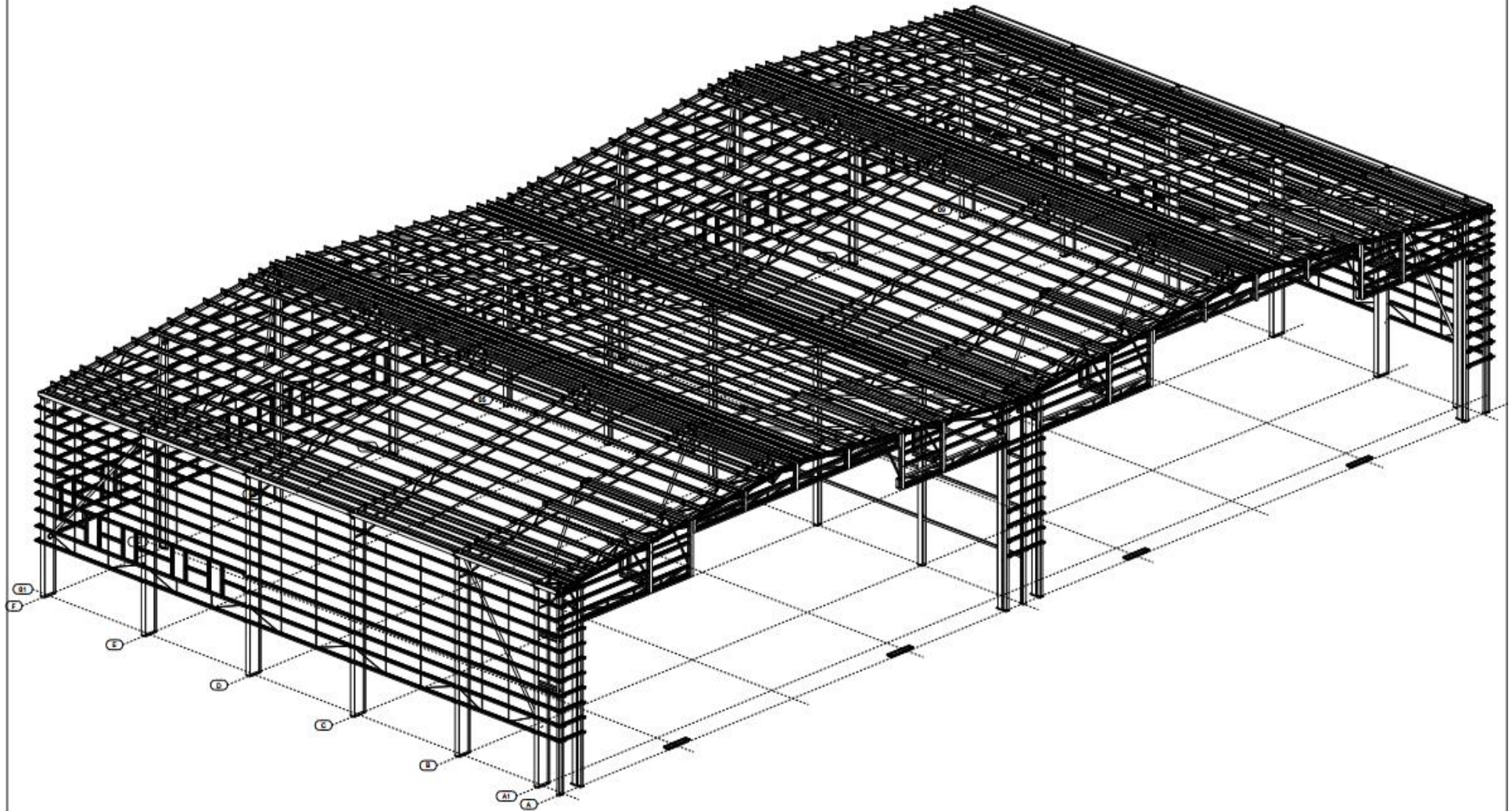
Hangar B - First Floor - 148 sq.m. (1,593 sq. ft)

Height of hangar doors at tallest sections is 9.0m

Width of hangar doors are both 32.2m



Galway Airport aircraft hangars (3,800m²)



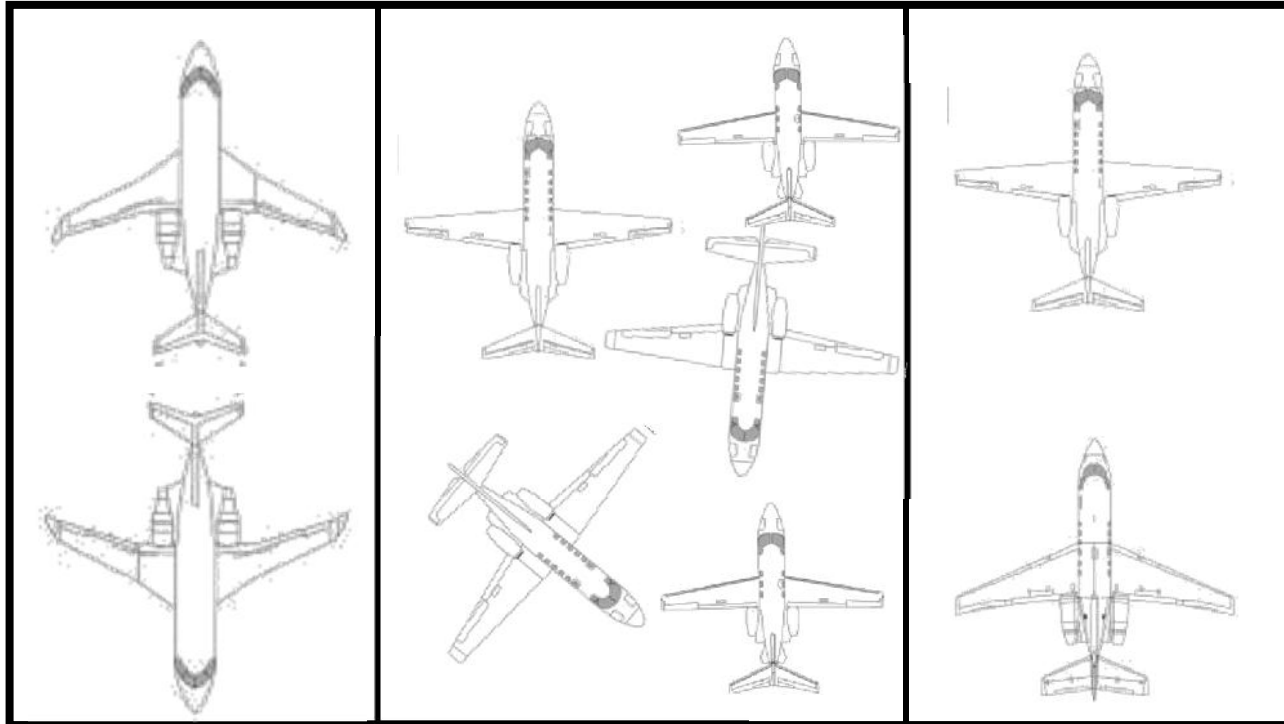
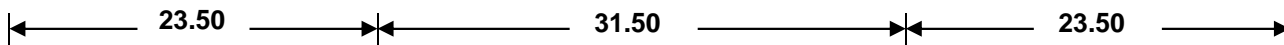
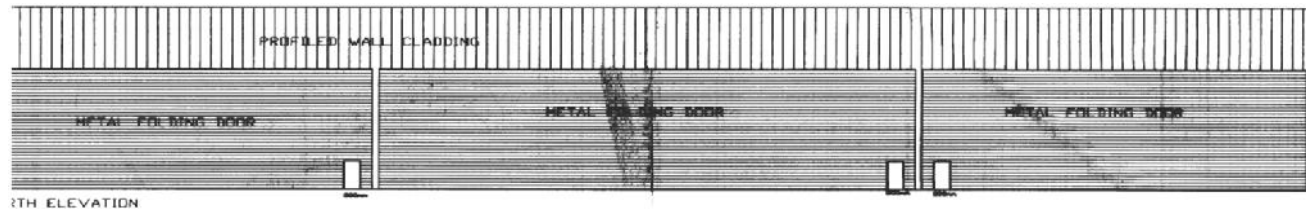
Double portal frame structure 72m wide * 40m long* 12m high.

Hangars to Let Dublin Weston Airport

The footprint of the hangars at Weston Airport measure almost 4,000 m² (43,000 sq ft) and are sub-divided into three separate sections. The entire front and back walls of the building are fully retractable.

The Hangars are fully heated with Re-Verber-Ray infra-red gas-fired heating system which has proved highly successful at this modern private facility.





46.00

